

**Available Space**

**63,936 sf**  
Available Immediately

**ADDRESS**

Corner of 38th & Pacific  
Tacoma, WA

**TRAFFIC COUNTS**

West leg on 38th = 19,481  
East leg on 38th = 25,804  
North leg on Pacific = 18,272  
South leg on Pacific = 25,917

**DEMOGRAPHICS**

**Population**

17,880 = 1 mile  
107,251 = 3 miles  
45,864 = 5 miles

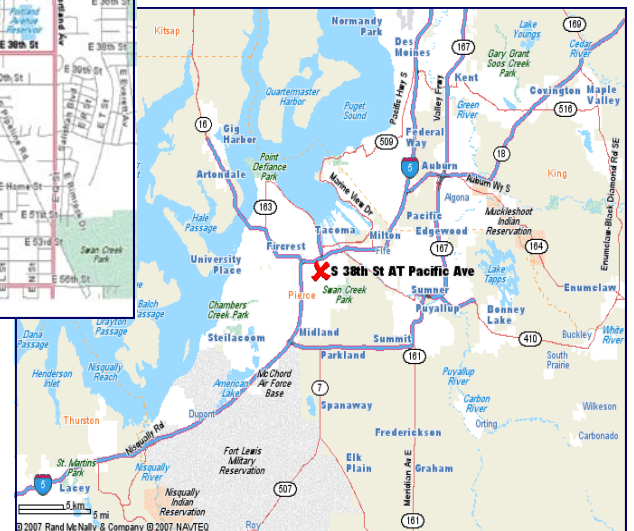
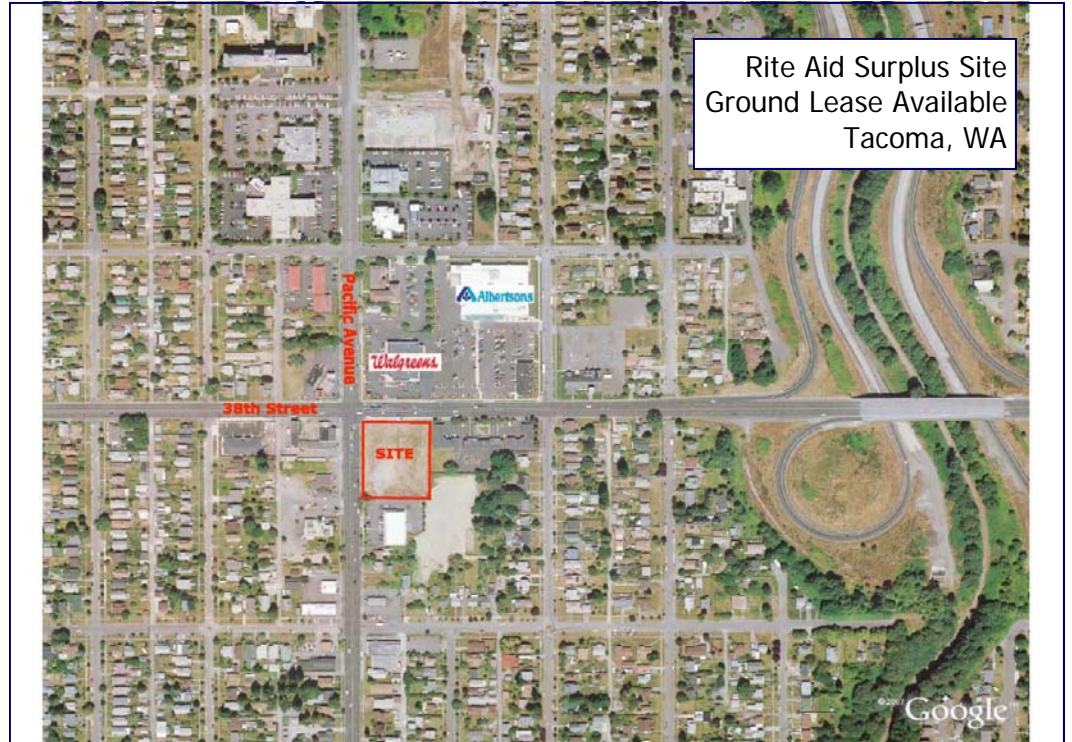
**Median Income**

\$46,278 = 1 mile  
\$42,181 = 3 miles  
\$45,864 = 5 miles

**For Additional Info  
Please Contact:**

**Brian Engelking**

**253-853-2840 (office)  
253-973-2324 (cell)**



[www.rainiercommercial.com](http://www.rainiercommercial.com)

Disclaimer: The above information has been secured from sources believed to be reliable, however, no representations are made to its accuracy. Prospective tenants or buyers should consult their professional advisors and conduct their own independent investigation. Properties are subject to change in price and/or availability without notice.